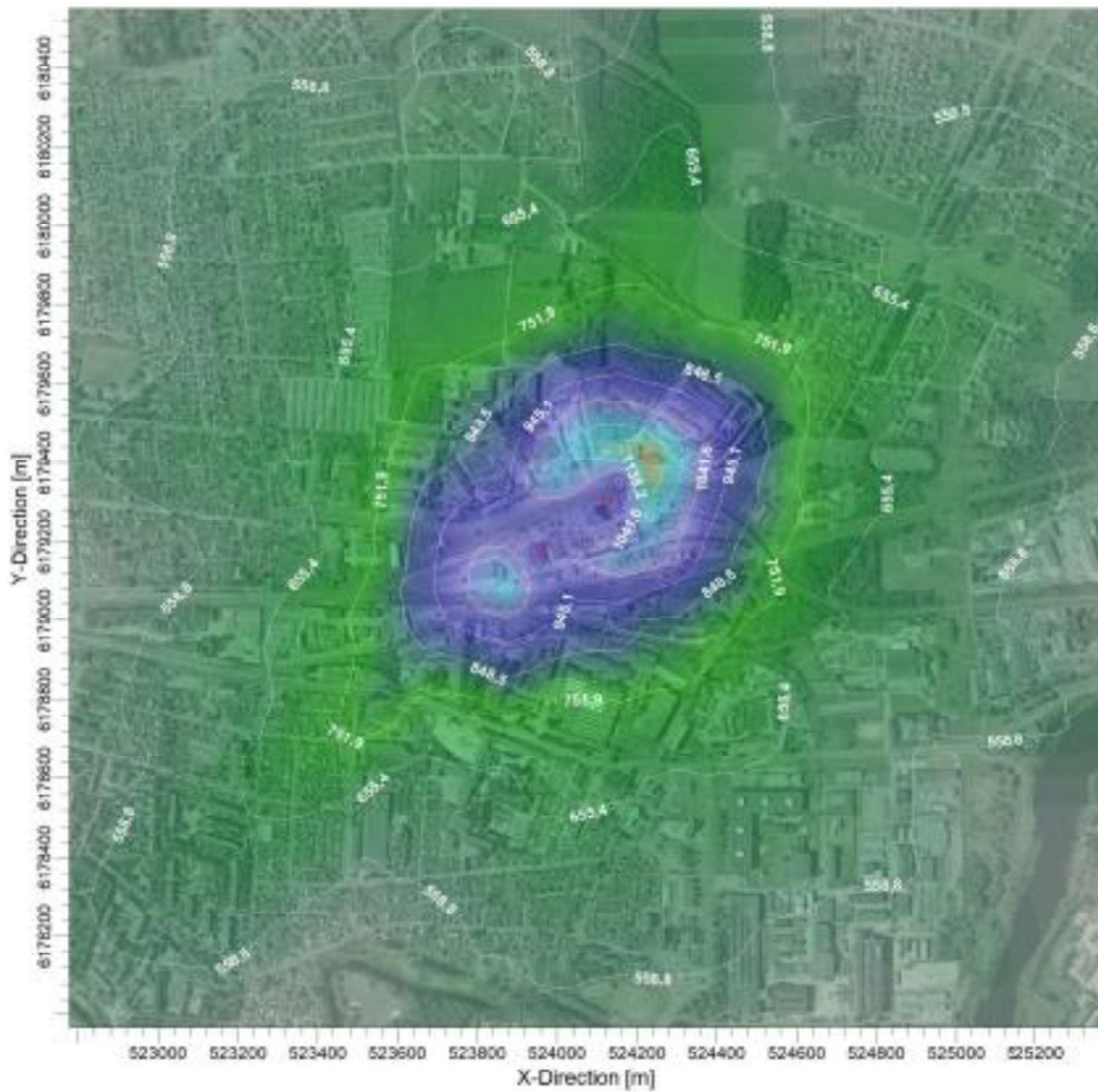


## **2. Aplinkos oro taršos sklaidos modeliavimo žemėlapiai;**

PROJECT TITLE:

**Anglies monoksidas (CO)  
8 valandų vidurkio koncentracijos (vertinus foninę taršą)**



PLOT FILE OF HIGH 1ST HIGH 8-HR VALUES FOR SOURCE GROUP: ALL

ug/m<sup>3</sup>

Max: 1331.3 [ug/m<sup>3</sup>] at (524224.73, 6179437.08)

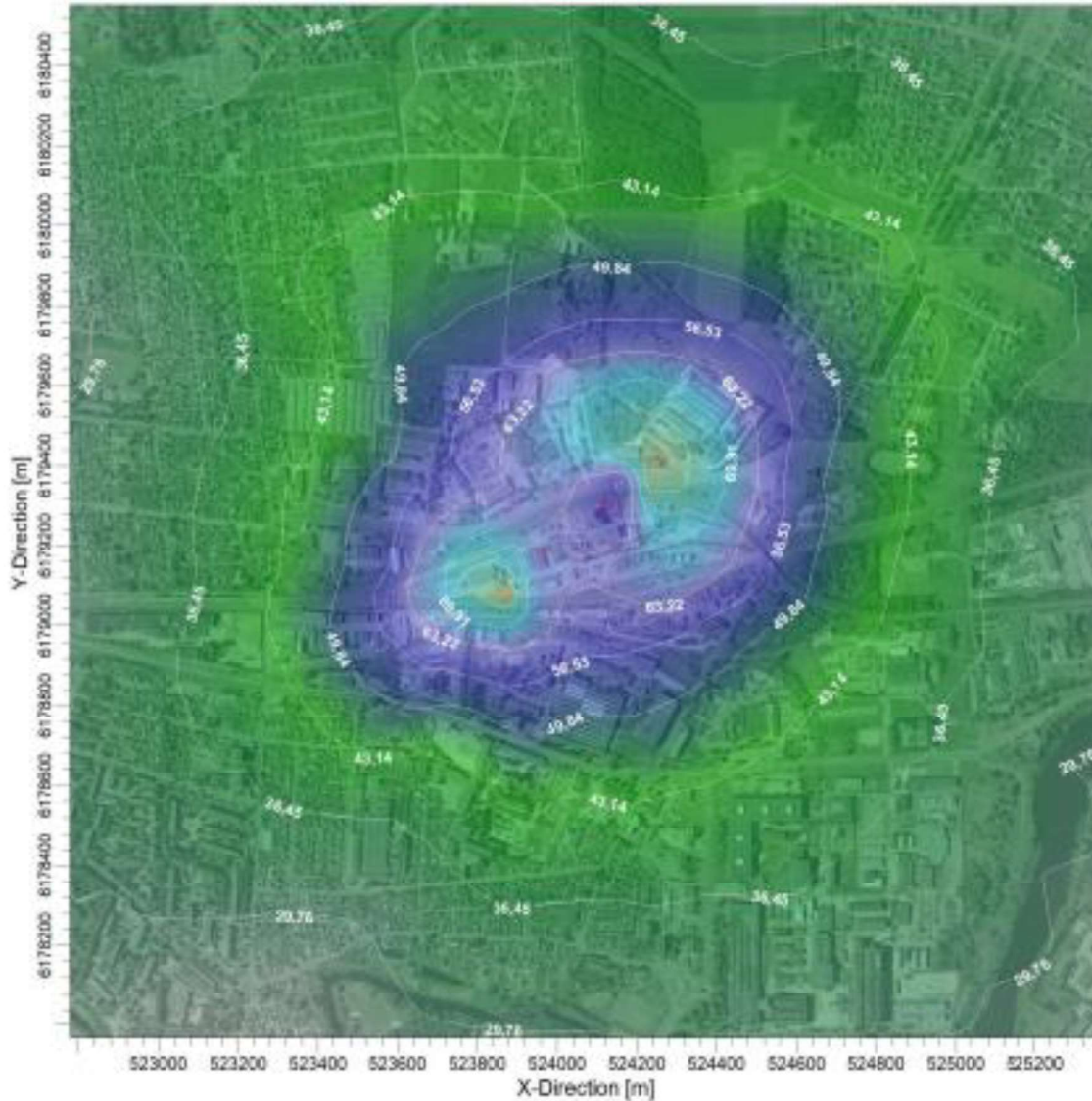


COMMENTS: Ribinis vertė - 10000 ug/m <sup>3</sup>	SOURCE: <b>2</b>	COMPANY NAME:	
	RECEPTOR: <b>1600</b>	MODEL:	
	OUTPUT TYPE: <b>Concentration</b>	SCALE: 1:10 000 	
	MAX: <b>1331,3 ug/m<sup>3</sup></b>	DATE: <b>2018-07-24</b>	PROJECT NO.:

PROJECT TITLE

**Azoto dioksīds (NO2)**

**1 valandas vidurķio koncentrācijas (vertinus foninj taršā)**



PLOT FILE OF 99.80TH PERCENTILE 1-HR VALUES FOR SOURCE GROUP: ALL

ug/m<sup>3</sup>

Max: 83.30 [ug/m<sup>3</sup>] at (523864.73, 6179083.84)



COMMENTS: Ribinj vertj - 200 ug/m <sup>3</sup>	SOURCE: <b>2</b>	COMPANY NAME:	
	RECEPTOR: <b>1600</b>	MODEL:	
	OUTPUT TYPE: <b>Concentration</b>	SCALE: 1:15 000 0  0.5 km	
	MAX: <b>83.30 ug/m<sup>3</sup></b>	DATE: <b>2018-07-24</b>	PROJECT NO.:

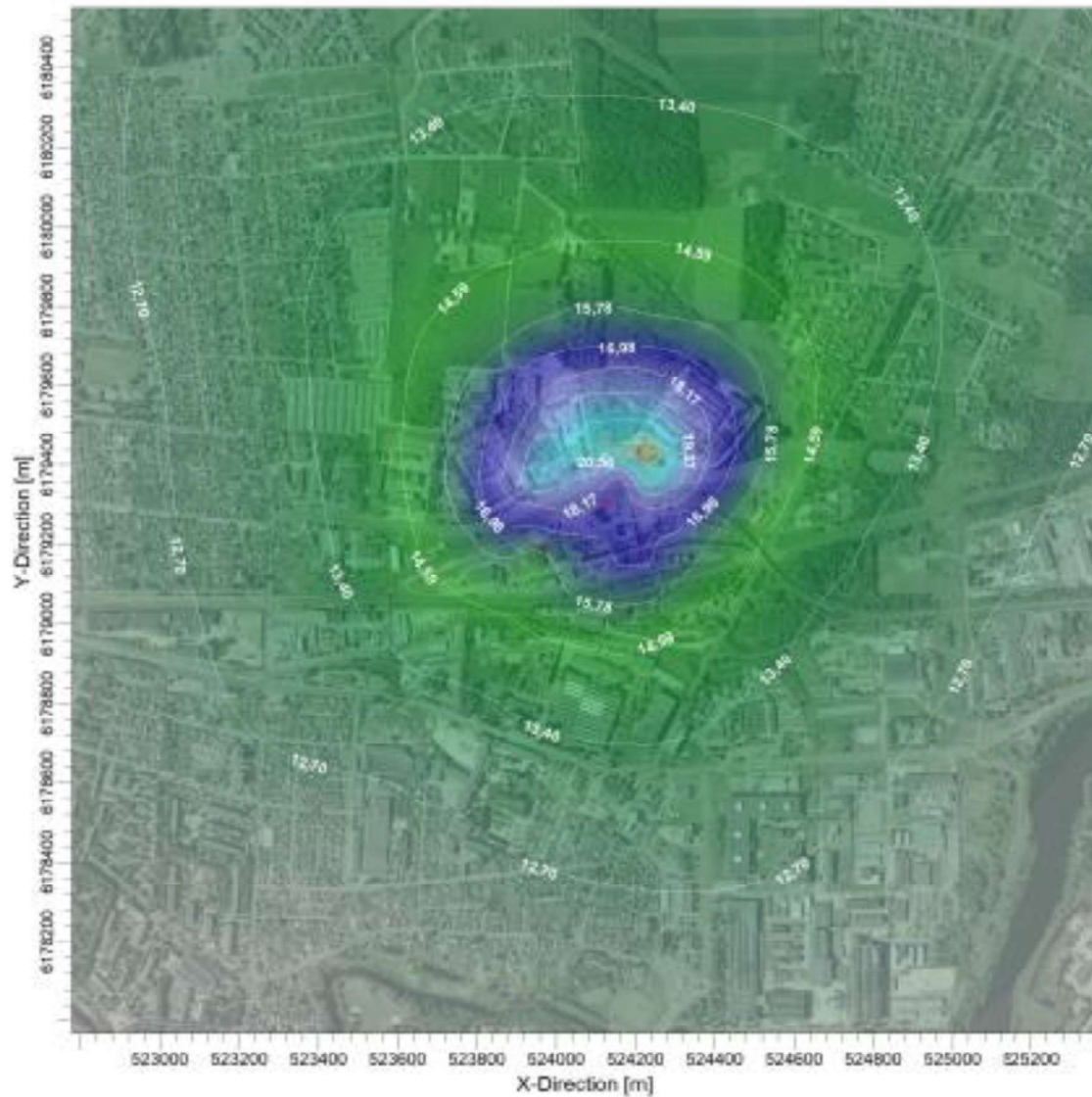
APFACD View - Lantec Environmental Software

© Green Dynamics Desktop\Kalline\NO2\PC\2018\NO2\NO2.mxd

PROJECT TITLE

**Azoto dioksidas (NO2)**

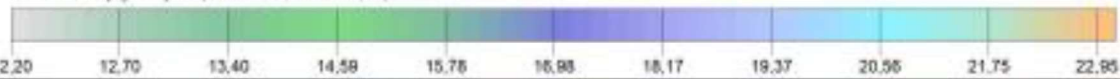
Metų vidurkio koncentracijos įvertinimas foninę taršą



PLOT FILE OF ANNUAL VALUES FOR SOURCE GROUP: ALL

ug/m<sup>3</sup>

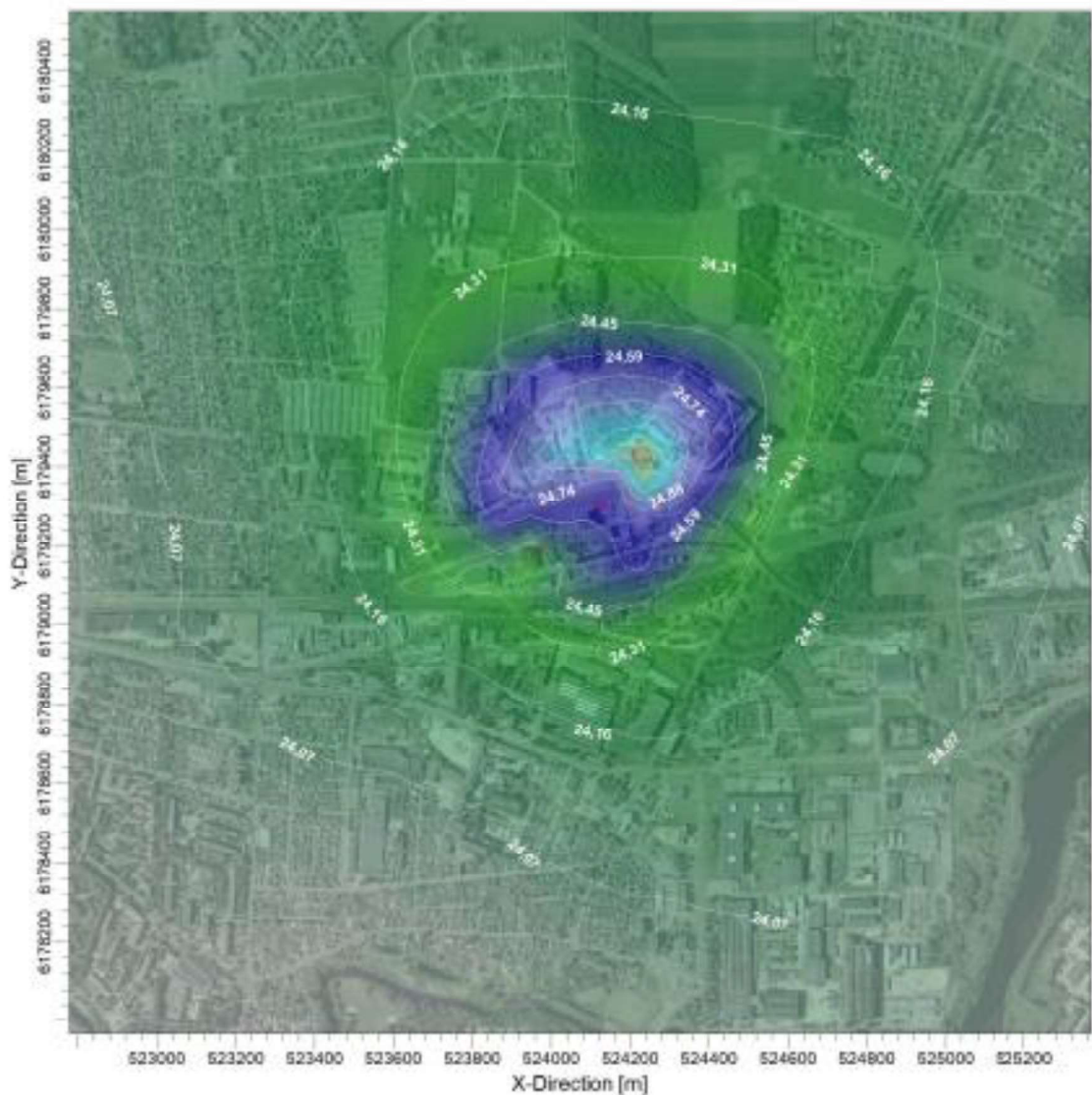
Max: 22,95 [ug/m<sup>3</sup>] at (524224,73, 6179437,08)



COMMENTS: Ribini ventis - 40 ug/m <sup>3</sup>	SOURCE: <b>2</b>	COMPANY NAME:	
	RECEPTOR: <b>1600</b>	MODEL:	
	OUTPUT TYPE: <b>Concentration</b>	SCALE: 1:10 000 0  0,5 km	
	MAX: <b>22,95 ug/m<sup>3</sup></b>	DATE: <b>2018-07-24</b>	PROJECT NO.:

PROJECT TITLE

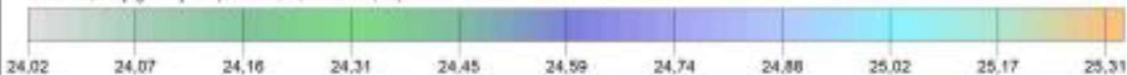
**Kietosios dalelės (KD10)  
Paros vidurkio koncentracijos įvertinus foninę taršą**



PLOT FILE OF 90.40TH PERCENTILE 24-HR VALUES FOR SOURCE GROUP: ALL

ug/m<sup>3</sup>

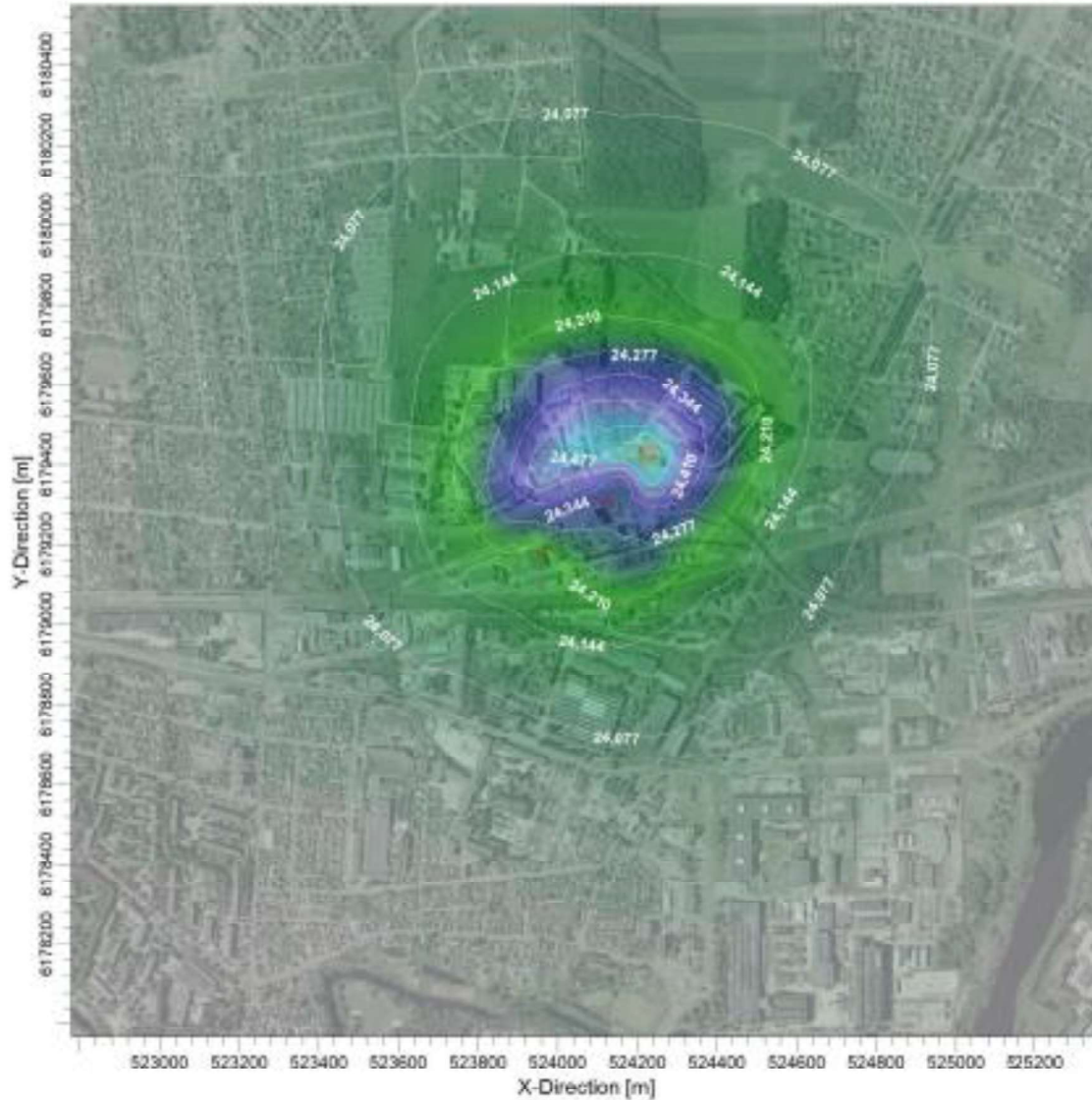
Max: 25,31 [ug/m<sup>3</sup>] at (524224.73, 6179437.08)



COMMENTS: Rizėnė vertė - 50 ug/m <sup>3</sup>	SOURCE: <b>2</b>	COMPANY NAME:
	RECEPTOR: <b>1600</b>	RECEIVER:
	OUTPUT TYPE: <b>Concentration</b>	SCALE: 1:10 000 0 0.5 km
	MAX: <b>25,31 ug/m<sup>3</sup></b>	DATE: <b>2018-07-25</b>

PROJECT TITLE:

Kietosios dalelės (KD10)  
Metų vidurkio koncentracijos įvertinus foninę taršą



PLOT FILE OF ANNUAL VALUES FOR SOURCE GROUP: ALL

ug/m<sup>3</sup>

Max: 24.610 [ug/m<sup>3</sup>] at (524224,73, 6179437,08)



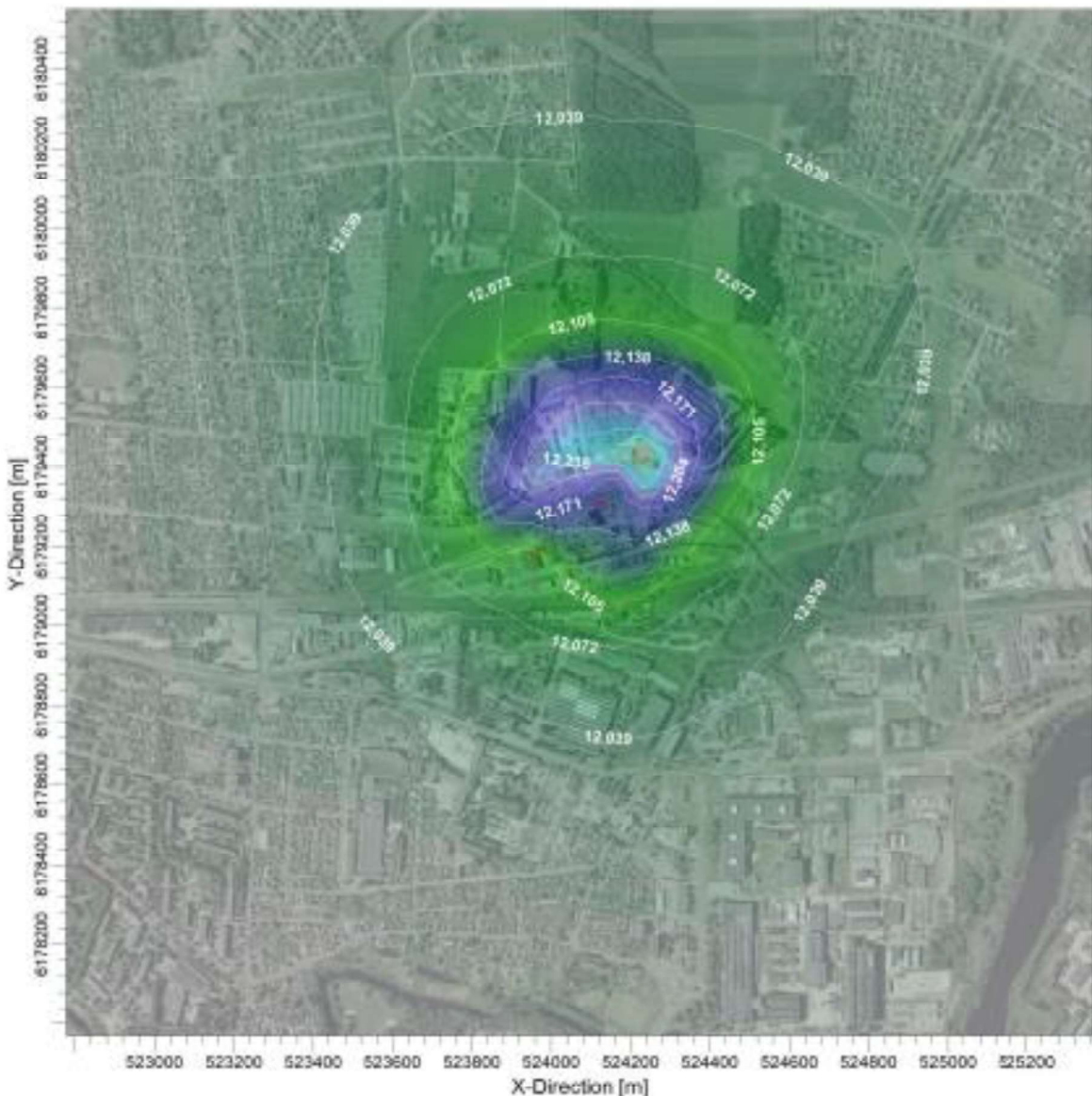
COMMENTS: Ribinė vertė - 40 ug/m <sup>3</sup>	SOURCE: <b>2</b>	COMPANY NAME:
	RECEPTOR: <b>1600</b>	RECEIVER:
	OUTPUT TYPE: Concentration	SCALE: 1:15 000 0 0,5 km
	MAX: <b>24,610 ug/m<sup>3</sup></b>	DATE: <b>2018-07-25</b> PROJECT NO.:

AIRSCAD View - Lantek Environmental Software

C:\Users\Darulis\Desktop\Kaltinis\RD-2\RD-2\KALDIXD\10304\10... .ax

PROJECT TITLE

**Kietosios dalelės (KD2,5)**  
**Metų vidurkio koncentracijos įvertinus foninę taršą**



PLOT FILE OF ANNUAL VALUES FOR SOURCE GROUP: ALL  
 Max: 12,304 [ $\mu\text{g}/\text{m}^3$ ] at (524224,73, 6179437,08)

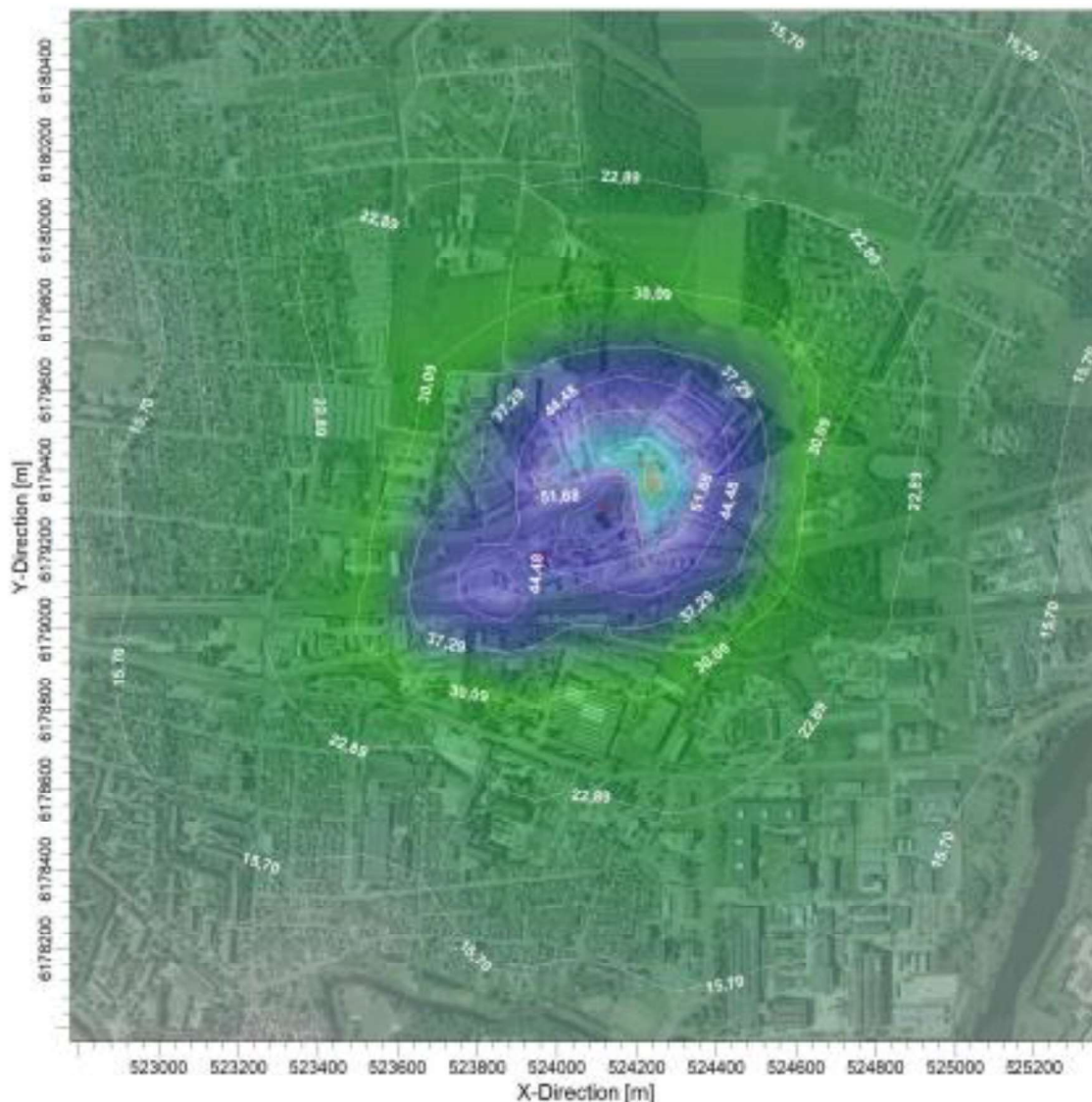
$\mu\text{g}/\text{m}^3$



COMMENTS: Ribinė vertė - 25 $\mu\text{g}/\text{m}^3$	SOURCE: <b>2</b>	COMPANY NAME:	
	RECEPTOR: <b>1600</b>	RECEIVER:	
	OUTPUT TYPE: <b>Concentration</b>	SCALE: 1:15 000 	
	MAX: <b>12,304 <math>\mu\text{g}/\text{m}^3</math></b>	DATE: <b>2018-07-25</b>	PROJECT NO.:

PROJECT TITLE

**Sieros dioksidas (SO<sub>2</sub>)**  
**1 valandos vidurkio koncentracijos įvertinus foninę taršą**



PLOT FILE OF 99.70TH PERCENTILE 1-HR VALUES FOR SOURCE GROUP: ALL

ug/m<sup>3</sup>

Max: 73.27 [ug/m<sup>3</sup>] at (524224.73, 6179348.77)



COMMENTS: Ribinė vertė - 350 ug/m <sup>3</sup>	SOURCE: <b>2</b>	COMPANY NAME:	
	RECEPTOR: <b>1600</b>	MODEL:	
	OUTPUT TYPE: <b>Concentration</b>	SCALE: 1:15 000 	
	MAX: <b>73,27 ug/m<sup>3</sup></b>	DATE: <b>2018-07-25</b>	PROJECT NO.:

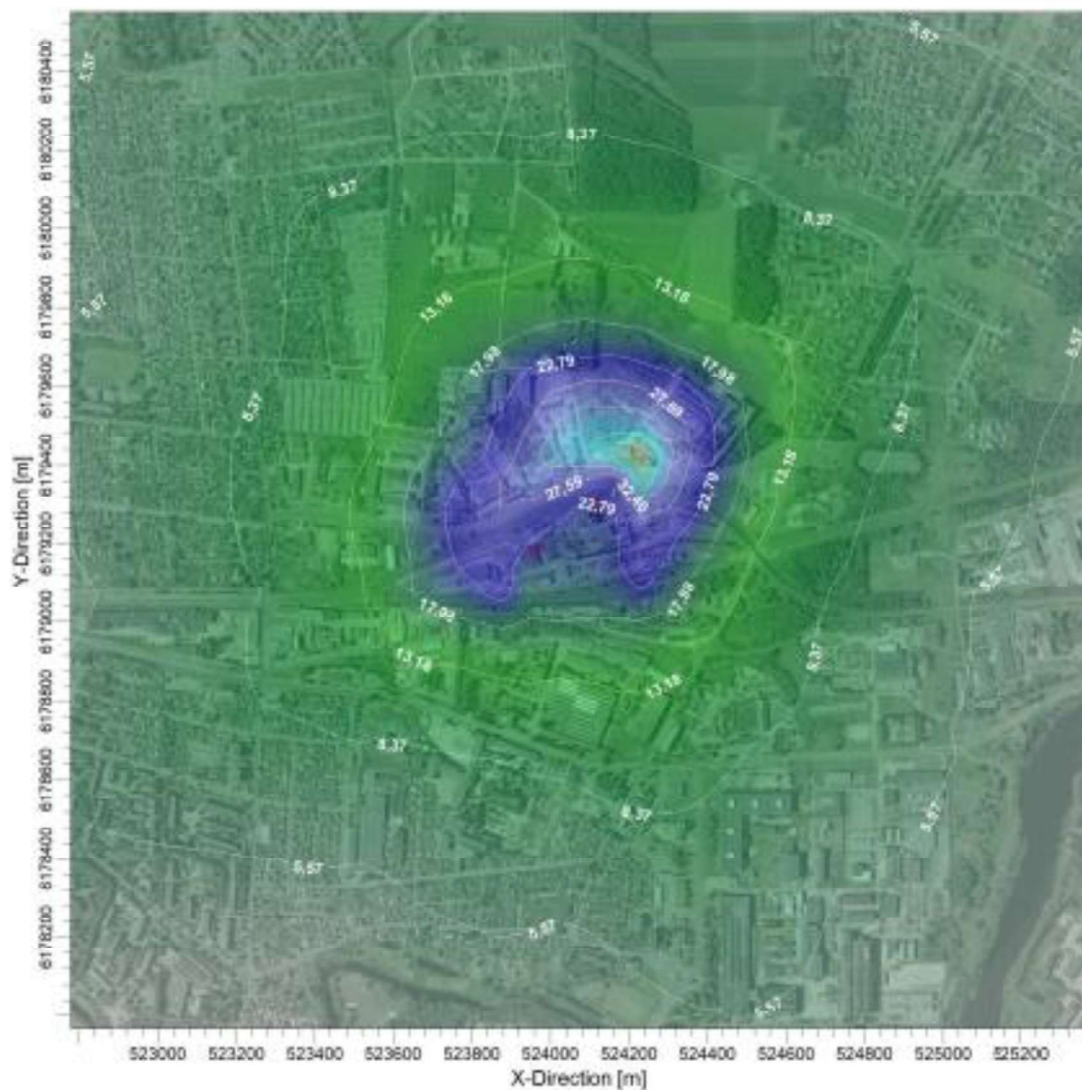
AIRMOD View - Lantek Environmental Software

C:\Users\Elaine\Desktop\Kulbina RK 2 PCH\2018\AOR\20180725\2



PROJECT TITLE

**Sieros dioksidas (SO2)**  
**Paros vidurkio koncentracijos įvertinus foninę taršą**



PLOT FILE OF 99.20TH PERCENTILE 24-HR VALUES FOR SOURCE GROUP: ALL

ug/m<sup>3</sup>

Max: 46,81 [ug/m<sup>3</sup>] at (524224.73, 6179437.08)



COMMENTS: Ribinė vertė - 125 ug/m <sup>3</sup>	SOURCE: <b>2</b>	COMPANY NAME:	
	RECEIPT CODE: <b>1600</b>	RECEIVER:	
	OUTPUT TYPE: <b>Concentration</b>	SCALE: 1:15 000 0 0,5 km	
	MAX: <b>46,81 ug/m<sup>3</sup></b>	DATE: <b>2018-07-25</b>	PROJECT NO.:

APRACIO View - Lantek Environmental Software

C:\Users\Tadas\Desktop\Kašeta\RC.2\RCM\RCM\_ADR\RCM2\rc2\_00